

# Lenovo Yoga AIO i (27", 11)

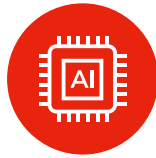
## Connect your Space

As the center of your space, the Yoga AIO i is built for creators, with a 27" QHD 16:9 display that rotates, lifts and swivels for flexibility. Powered by Intel® Core™ Ultra Series 3 processor and NVIDIA® GeForce RTX™ 5060 for stunning graphics. With 5 USB ports and optional wireless charging, it's the ultimate creative hub.



### Game, Create, Conquer—All Without Limits

Power through any creative task with the Yoga AIO i. Packed with up to Intel® Core™ Ultra 7 processors, it's all about next-gen speed that scales with you—whether you're gaming, creating, or multitasking like a pro. No limits, no lag, just pure performance that keeps up with your biggest moves.



### Unleash Next-Gen Performance and Stunning Graphics

Fuel your creativity with a 27" QHD display and next-gen performance options. Opt for the NVIDIA® GeForce RTX™ 5060 dGPU for unparalleled graphics and seamless multitasking.



### Spin It, Lift It, Own It—Your Perfect View Awaits

Find and capture your perfect view with the 2.5K QHD display—borderless on all sides, crazy smooth at 120Hz, and color accurate at 99% sRGB. Whether you're creating or bingeing, TÜV Low Blue Light keeps eyes fresh. Plus, its 3-mode flexibility—lift, rotate, and the all-new swivel—lets you find the perfect angle for every moment.



### Your Space, Elevated

Stunning inside and out—the Yoga AIO i's minimalist, space-saving design brings elegance to any space. Dual JBL 5W woofers and 3W tweeters drop rich, immersive Dolby Atmos sound, while noise-canceling mics keep your voice crisp. The built-in up-to-5MP IR camera ensures flawless video calls and streams, delivering professional-level clarity.



# Lenovo Yoga AIO i (27", 11)

## SPECIFICATIONS

YOGA AIO 27IPH11\*

### PERFORMANCE

#### Processor

Intel® Core™ Ultra 7 356H  
Intel® Core™ Ultra 5 325

#### Operating System

Windows 11 Home  
Windows 11 Pro

#### Graphics

Discrete: NVIDIA RTX 5060 8GB (optional)

#### Memory

16G/32G, LPDDR5X 7467

#### Storage

512G/1TB, PCIE Gen4

#### Camera

5M/5M IR Camera

#### Microphoto

Dual Microphone Array, FF

#### Audio

JBL 5W\*2 woofer,  
JBL 3W\*2 tweeter  
Dolby Atmos®

#### Power Supply

135W/170W/245W<sup>2</sup>

### DESIGN

#### Display

27" QHD (2560\*1440), IPS, 120Hz, 16:9,  
99% sRGB, 350 nits, supports lift/  
rotate/swivel, TÜV Low Blue Light panel

27" QHD (2560\*1440), IPS, 120Hz, 16:9,  
99% sRGB, 300 nits, supports lift/  
rotate/swivel, TÜV Low Blue Light  
panel, Touchscreen<sup>3</sup>

#### Dimensions (W x D x H)

(mm) : 613 x 235 x 565  
(inches) : 24.13 x 9.25 x 22.24

#### Weight

Starting at 7.53 kg (16.60 lbs)

### CONNECTIVITY

#### WLAN

WiFi 7

#### LAN

Giga LAN 10/100/1000M

#### Bluetooth®

Bluetooth® 5.4

#### Side I/O

1 x Headphone & Mic combo port  
1 x USB-C<sup>1</sup>  
1 x USB-A 3.2 Gen2<sup>1</sup>  
1 x Power button  
1 x Joystick (OSD)  
1 x E-shutter  
1 x Switch button

#### Rear I/O

1x USB-C  
1x USB-A 3.2 Gen2<sup>1</sup>  
1x USB-A 2.0 (KB/M sharing)  
Ethernet (RJ45)  
HDMI-out (2.1 / TMDS)  
Power DC in  
HDMI-in

### PRELOADED SOFTWARE

- Windows 11 Home/Pro
- Microsoft 365 Trial
- McAfee+ Premium Trial
- Lenovo Vantage
- Lenovo AI Turbo Engine
- Lenovo Smart Connect
- Lenovo AI Now
- Dolby® Access
- Adobe Creative Cloud Pro 2-month trial

### NOTEABLE MENTIONS

- Lifiable, rotatable and swivel stand
- Energy Star 9.0
- Support Lenovo CO2 Offset Service
- 30% ocean-bound plastic in system bag



<sup>1</sup> The actual transfer speed of the USB 3.2 will vary and, depending on many factors, such as the processing capability of host and peripheral devices, file attributes and other factors related to system configuration and your operating environments, may be slower than a speed of 20 Gbit/s.

<sup>2</sup> On selected models only.

<sup>3</sup> Optional.

## LENOVO SERVICES

### Lenovo Premium Care Plus

Lenovo Premium Care Plus is the ultimate PC support experience with you as our priority 24/7. Enjoy personalized hardware and software support from a global network of elite technicians, along with accidental damage protection, fast repairs with onsite support, extended battery warranty, data migration assistance, and smart performance solutions that optimize PC performance and security.

### Lenovo Smart Performance

Smart Performance Services within Lenovo Vantage will keep your system running at optimum performance and proactively fix issues that affect PC performance, internet performance, remove malware, and improve device security.

### Lenovo Accidental Damage Protection

Avoid the hassles of unexpected damage & repair costs. With coverage for drops, spills, electric surges, and broken LCD screens, accidental damage protection makes it easy to repair to your PCs and ensures your device is up and running fast.

### Lenovo CO<sub>2</sub> Offset Services

Offset the carbon emissions of your PC with Lenovo CO<sub>2</sub> Offset Services - an easy and transparent solution to offset emissions across the average lifecycle of your device. These offsets are invested in UN-approved initiatives like renewable energy or ecological projects, thus contributing towards a more sustainable future.

### Lenovo Warranty Extensions (Up to 3 Years Duration)

Gain complete peace of mind by extending your base warranty to up to 3 years and minimize unexpected repair costs.

## OPTIONS & ACCESSORIES



Lenovo 700 Multi-Device  
Wireless Silent Mouse



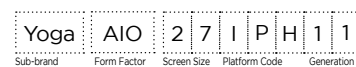
Lenovo 700 Modern Multi-  
Device Wireless Keyboard

## McAfee® LiveSafe™

Register McAfee® to enjoy these benefits in your FREE 30-day trial.

- Award-winning Antivirus
- Password Manager
- Safe Web Browsing
- Multi-device Compatibility
- Identity Theft Protection
- Free Customer Support

\* Example of Lenovo catalogue naming convention



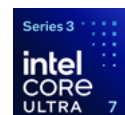
### Intel® platform codes

Gemini Lake: **IGM**, Whiskey Lake: **IWL**, Icelake: **IIL**, Gemini Lake: **IGL**, Comet Lake: **IML**, Tiger Lake: **ITL**, Alder Lake: **IAP**, Alderlake-HX: **IAH**, Alderlake-U15: **IAU**, Alderlake-P28: **IAP**, Alderlake-P28/U15: **IAL**, Alderlake-H45: **IAH**, Alderlake N: **IAN**, Raptorlake-PX: **IRP**, Raptorlake-H: **IRH**, Raptorlake-HX: **IRX**, Alderlake-M U9: **IAM**, Raptorlake U: **IRU**, Meteorlake P: **IMP**, Raptorlake-P: **IRP**, Raptorlake-P28/U15: **IRL**, Meteor Lake-H: **IMH**, Lunar Lake: **ILL**, Panther Lake: **IPH**

## WWW.LENOVO.COM

Lenovo reserves the right to alter product offerings and specifications at any time, without notice. Lenovo makes every effort to ensure accuracy of all information but is not liable or responsible for any editorial, photographic or typographic errors. All images are for illustration purposes only. For full Lenovo product, service and warranty specifications visit [www.lenovo.com](http://www.lenovo.com). Lenovo makes no representations or warranties regarding third party products or services. **Trademarks:** The following are trademarks or registered trademarks of Lenovo: Lenovo, the Lenovo logo, ideapad, IdeaCentre, yoga and yoga home. Microsoft, Windows and Vista are registered trademarks of Microsoft Corporation. Intel, the Intel logo, Intel Inside, Intel Core, and Core Inside are trademarks of Intel Corporation in the U.S. and/or other countries. Other company, product and service names may be trademarks or service marks of others. Visit [www.lenovo.com/lenovo/us/en/safecomp/](http://www.lenovo.com/lenovo/us/en/safecomp/) periodically for the latest information on safe and effective computing.

©2026 Lenovo. All rights reserved.



Lenovo